

Understanding how your child *learns best.*

KIDARO.APP • AGES 7-10 • 20-30 MIN INTERVIEW

What's *inside*.

01	Executive Summary Why a Learning Profile, and what Kidaro is for	03
02	When the Right Answer Is Hard to See The same behavior, different causes	04
03	Why Responsive Support Matters Helping a child continue, not just keep going	05
04	What Is Kidaro Three elements that build the Learning Profile	06
05	How Kidaro Works Assessment, Profile, and practical guidance	07
06	The Twelve Dimensions A set of lenses, not a report card	08
07	An Illustrative Learning Profile Figure 1: a pattern across twelve dimensions	09
08	Research Foundations Built with SWPS University researchers	10
09	Responsible Design & Clear Boundaries Five guiding principles	11
10	What This Looks Like in Practice Three everyday scenarios	12
11	Kidaro for Your Needs At home, in school, and in support settings	13
12	Looking Ahead From snapshot to responsive learning	14
13	Conclusion Better learning decisions, one moment at a time	15

Better support starts with *understanding* what a child may need in the moment.

Every day, parents, teachers, tutors, and after-school instructors make small decisions that shape how children experience learning. Most have seen a familiar moment: a child sits down to homework, starts an exercise they seemed to understand yesterday, and suddenly gets stuck.

They may hesitate, lose focus, repeat mistakes, or say, "*I don't want to do this.*" In that moment, the adult has to decide what may help: explain the instruction differently, slow the pace, offer encouragement, take a short break, change the format, or step away entirely.

These decisions are usually made through observation, experience, and instinct. Adults can often tell when something is not working. What is harder to know is *why*. Kidaro helps with this, giving adults a clearer picture of what may be getting in the child's way, so they can respond with more confidence and less guesswork.

IN SHORT

Kidaro is a non-clinical learning assessment for children ages 7 to 10. Through a guided onboarding process for both the parent and the child, it builds a **Learning Profile**: a practical picture of how a child approaches new tasks, where help may be needed, and what can help them move forward with more confidence.

The Learning Profile is not the end of the process. It is the basis for how Kidaro adapts content, pacing, format, and guidance to the individual child. In practice, two children working on the same skill may receive different forms of support: a smaller first step, a visual example, slower pacing, a pause before feedback, or a different way back into the activity.

Many learning platforms focus primarily on content: lessons, exercises, scores, and progress tracking. Kidaro starts earlier, with the conditions that shape progress: the child's unique learning profile, how the child experiences the work, where friction appears, and what is most likely to help them continue.

- Kidaro is not a diagnostic tool. Its purpose is to help adults make *better decisions in the moments that matter*, reduce avoidable frustration, and make education more responsive to the individual child.

When the *right answer* is hard to see.

Learning does not happen only through lessons, exercises, or curriculum. It is also shaped by the small adjustments adults make while a child is working through a task.



In practice, these decisions are rarely obvious. Mistakes, hesitation, distraction, frustration, or avoidance may look similar on the surface — but they can point to different needs from one child to another, or even from one day to the next.

A child may be tired, overloaded, discouraged, bored, distracted, or confused by the way the task is presented. Each situation calls for a different kind of support.

Without enough context, adults may choose an approach that does not match the child's underlying need. They may continue when a child needs a break, simplify when the child needs a different explanation, or encourage persistence when the task needs to be reframed.

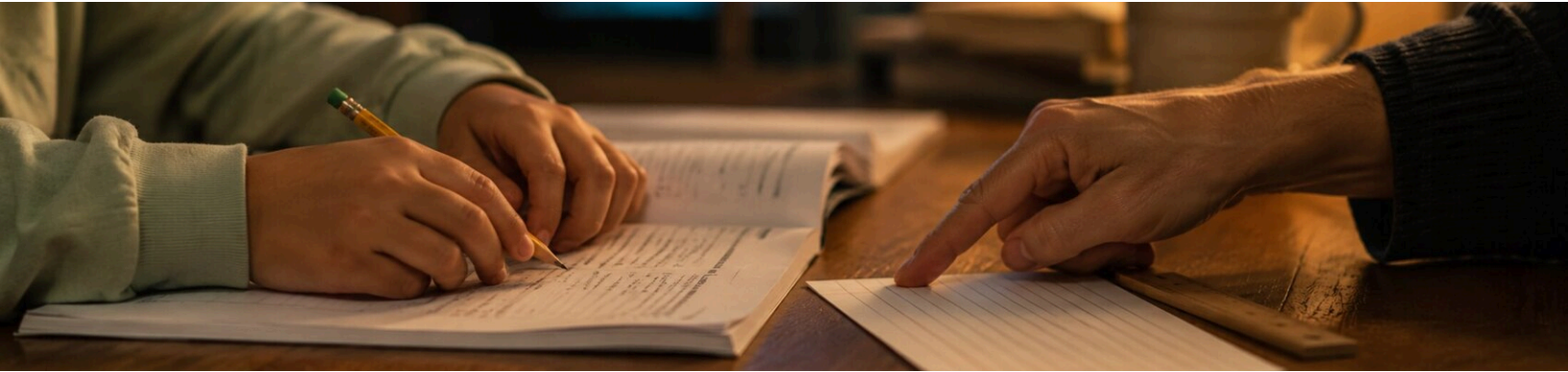
When these small mismatches happen repeatedly, learning can become harder than it needs to be. A child may lose confidence, avoid certain tasks, or begin to expect frustration before the work even starts.

Kidaro helps adults read these patterns more clearly and turn them into a Learning Profile that informs how learning is adapted to the individual child.

- The same behavior can have *different causes*. Better support begins with noticing the difference.

Why *responsive support* matters.

A child may handle a math problem calmly one afternoon and find a similar one overwhelming the next day after school. The exercise has not changed, but the child's readiness has.



That is why responsive support matters.

- ✔ Sometimes a child does not need more content, but a **clearer example**.
- ✔ Sometimes they do not need to try harder, but to **take a smaller first step**.
- ✔ Sometimes they do not need immediate correction, but a **pause, encouragement, or a different way back into the work**.

Many educational tools provide explanations, practice activities, and homework help. These can be useful. But helping a child continue is not only about *what* comes next. It is also about *how* that next step is introduced, paced, and guided.

WHERE KIDARO FITS

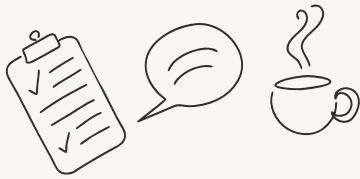
Kidaro uses the Learning Profile to make the next step more responsive to how the child is learning in that moment.

Specialists such as school psychologists, educational assessors, learning specialists, and therapists remain essential when children need deeper evaluation or targeted support. Kidaro is **not a replacement** for professional judgment. It is a practical tool for everyday learning moments — before, after, and between formal evaluations.

What is *Kidaro*.

Kidaro is an adaptive learning app, initially for children ages 7 to 10, that begins with a non-clinical learning assessment. The assessment creates a Learning Profile, which then helps Kidaro adapt content, pacing, format, and guidance to the individual child.

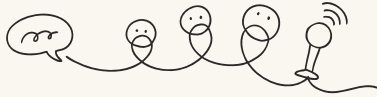
The assessment combines three elements.



PARENT INTERVIEW

A structured parent interview

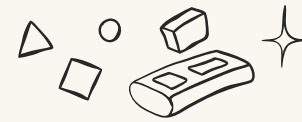
Gathers context about how the child approaches learning at home, what tends to engage them, and where adults have noticed difficulty or frustration.



CHILD INTERVIEW

A gentle, child-led conversation

Voice or text input, brief emotional check-ins, and short creative activities — so the experience feels like a conversation, not a test.

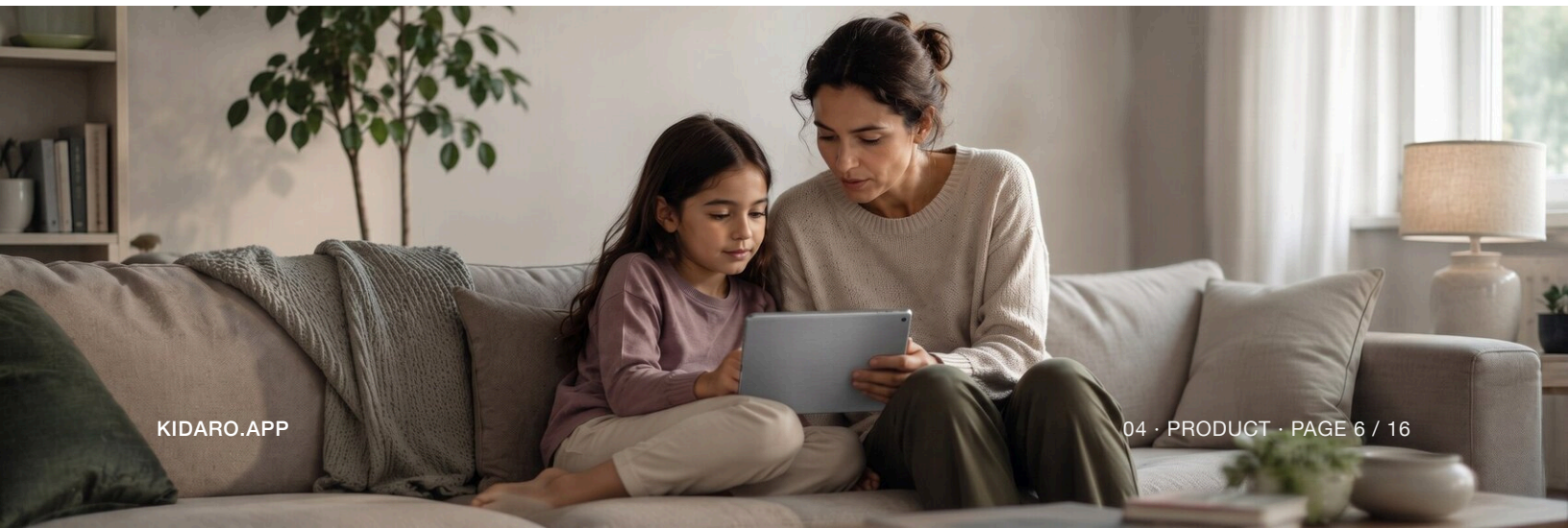


IN-APP ACTIVITIES

Short, play-based activities

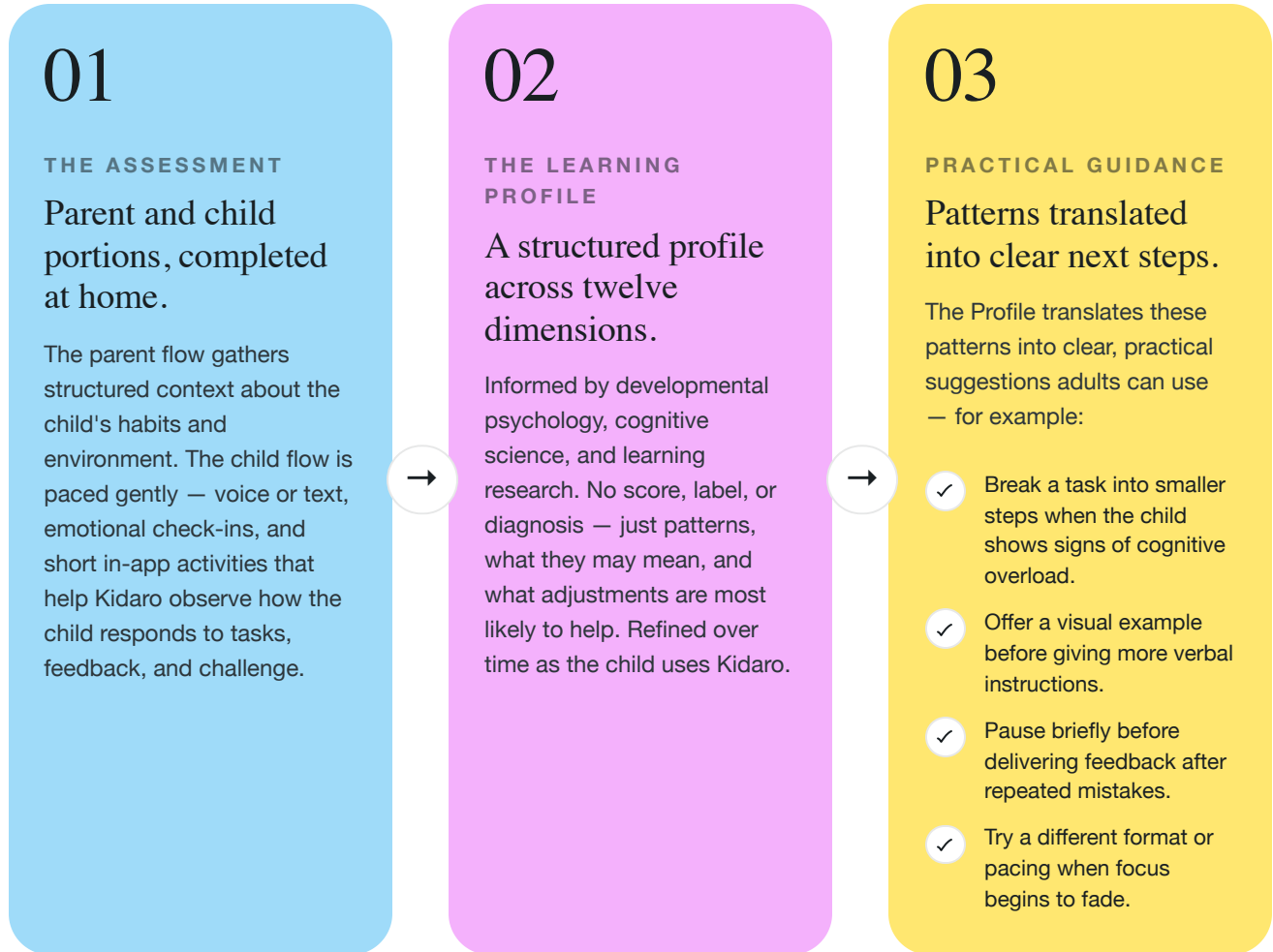
Kidaro observes how the child engages with challenge, handles mistakes, and responds to tasks that shift in difficulty — without pressure, scores, or judgement.

Together, these elements produce the **Learning Profile**: a structured report that describes how a child tends to learn, where friction may appear, and what kinds of adjustments are worth trying first. The profile then helps Kidaro decide what to adjust first — from the type of content to the pace, format, and level of support.



How Kidaro works, in *three steps*.

From assessment, to Learning Profile, to practical guidance — Kidaro turns what a family already knows about their child into something an adult can act on in the moment.



These are low-risk forms of guidance designed to help adults respond more effectively when a child becomes stuck, frustrated, distracted, or unsure how to continue. Over time, these suggestions can become more specific as Kidaro learns which kinds of support help the child move forward.

Twelve dimensions of the *Learning Profile*.

The Learning Profile helps adults organize what they notice about a child's learning. It is not a fixed assessment of *who* the child is — it's a practical way to understand factors that may affect how the child engages with tasks, responds to challenge, and benefits from support. Think of these dimensions not as a test or report card, but as **a set of lenses** — they help adults, and Kidaro, see more clearly where support is most likely to make a difference, and why.

<p>1 Readiness & Wellbeing Whether the child seems ready to learn or may need rest, reassurance, or a different pace.</p>	<p>7 Attention How the child starts, maintains, and returns to focus during an activity.</p>
<p>2 Development & Core Skills Skills and developmental factors that may shape how the child approaches tasks.</p>	<p>8 Working Memory How the child handles instructions, tasks, or problems with several steps.</p>
<p>3 Emotional Comfort How calm, comfortable, frustrated, or discouraged the child appears during learning.</p>	<p>9 Reasoning Patterns How the child approaches problem solving, patterns, and logical steps.</p>
<p>4 Interests & Engagement Topics, formats, and activities that tend to keep the child involved.</p>	<p>10 Executive Functions How the child plans, adjusts, switches strategies, and checks their work.</p>
<p>5 Motivation & Persistence How the child responds when a task becomes difficult or requires sustained effort.</p>	<p>11 Pacing & Response Style Whether the child tends to answer quickly, pause, reflect, or change approach.</p>
<p>6 Sensory Preferences Whether noise, visual complexity, movement, or other conditions may affect focus.</p>	<p>12 Learning Self-Awareness Whether the child begins to notice what helps them learn, focus, and recover after difficulty.</p>

The purpose of the Profile is to support **better decisions**, not to categorize children. A useful Learning Profile helps adults ask clearer questions:

<p>✓ What seems to help this child stay engaged?</p>	<p>✓ What creates friction or frustration?</p>	<p>✓ What kind of support helps the child continue with more confidence?</p>
--	--	--

The Profile can also be viewed as a pattern across these dimensions. This helps adults understand that learning needs are rarely about one single factor, but about how several dimensions may work together in practice.

An illustrative Learning Profile.

A representative view of how the twelve dimensions appear together. Each axis maps to one dimension of the Learning Profile; the shape that emerges is the pattern adults can read and act on.

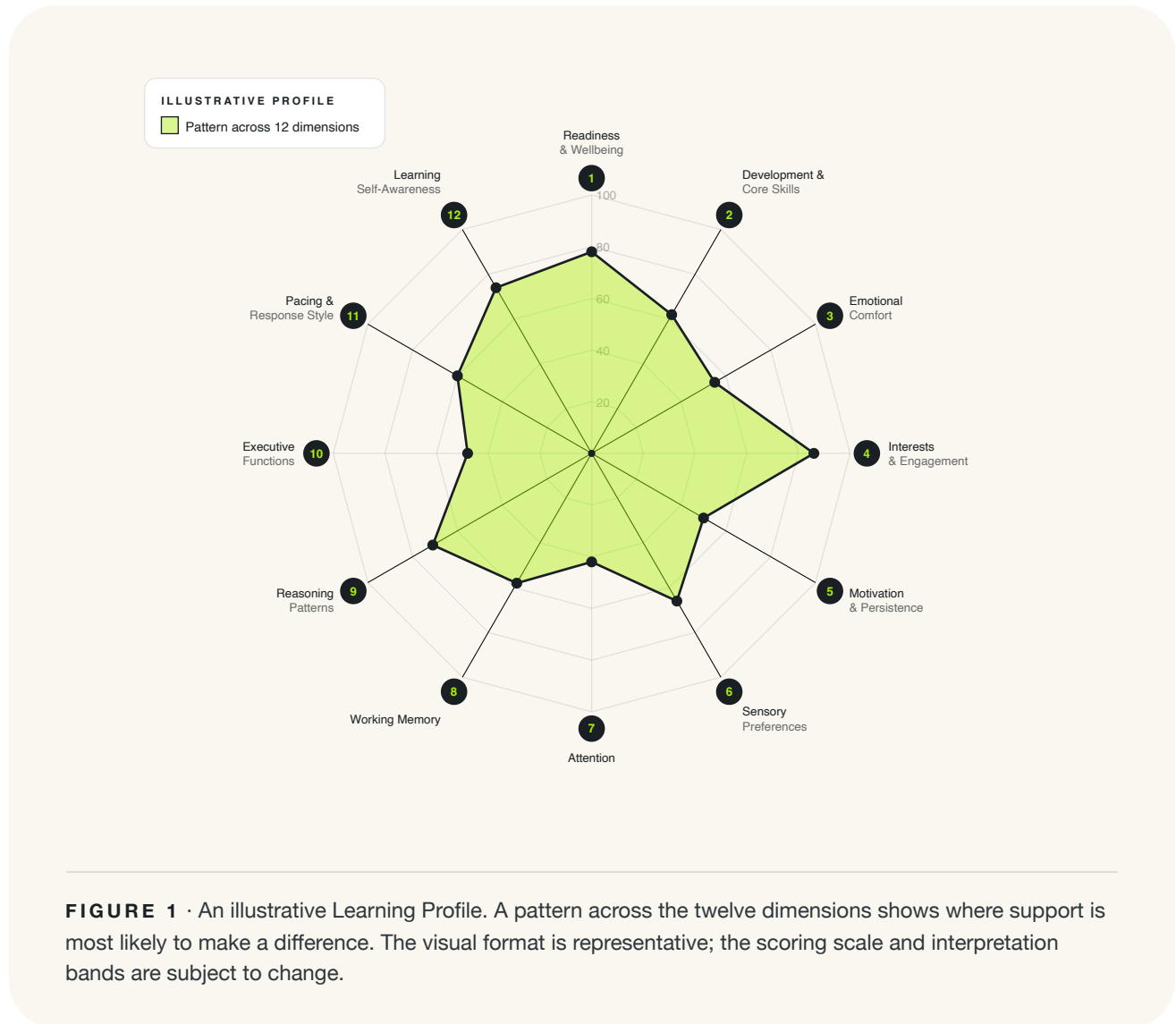


FIGURE 1 · An illustrative Learning Profile. A pattern across the twelve dimensions shows where support is most likely to make a difference. The visual format is representative; the scoring scale and interpretation bands are subject to change.

Kidaro is designed to support children — not define them. The Profile is a starting point for clearer conversations between adults and the children they support, not a label or a verdict.

Research *foundations.*

Kidaro is designed in close collaboration with child behavioral and developmental psychologists, with additional input from professionals with advanced academic and practical expertise in educational psychology, cognitive science, and learning support.

The Learning Profile framework was developed in partnership with researchers at SWPS University — Poland's leading institution for psychology and social sciences — ensuring its foundations are grounded in rigorous academic expertise and real-world learning research.

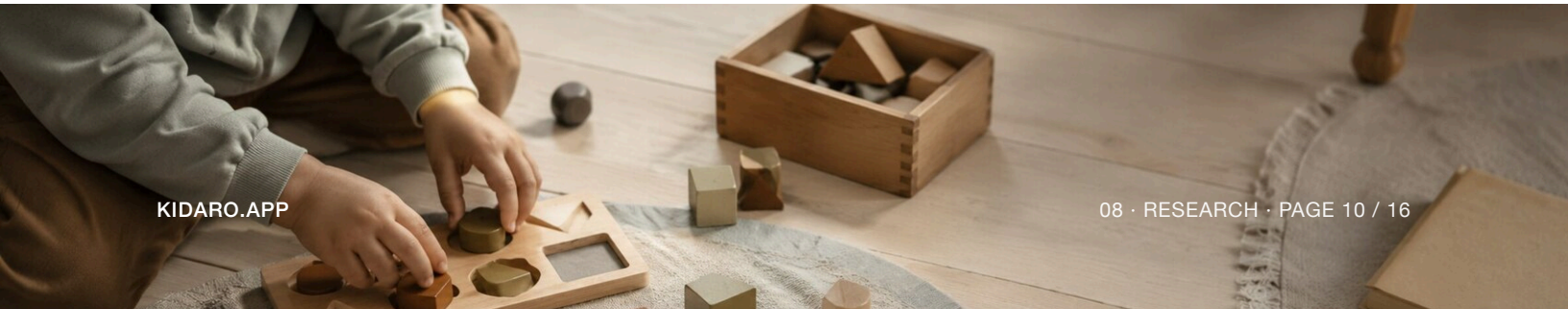


The framework is informed by established research on how children engage with learning tasks, respond to challenge, manage attention, process multi-step information, and recover after frustration or mistakes.

Kidaro's framework is continuously developed and reviewed by a team of experts to ensure that the platform remains practical, responsible, and aligned with current understanding of how children learn.

— THE GOAL

Not to diagnose, label, or rank children — but to turn knowledge from child development and learning science into **practical guidance adults can use** in everyday learning situations.



Responsible design & *clear boundaries*.

Kidaro is designed to support real learning decisions in a safe, transparent, and responsible way. It does not diagnose learning difficulties, assign labels, suggest medical conditions, or replace professional judgment.

Five principles guide how Kidaro is built and used:



Non-clinical by design

Kidaro focuses on practical learning support, not clinical assessment or diagnosis.



Traceable recommendations

Suggestions in the Learning Profile are mapped to specific signals from the assessment. Adults can see why a recommendation was made and what it is based on.



Conservative when information is limited

When signals are weaker or less consistent, Kidaro offers broader, lower-risk guidance. Stronger guidance requires consistent patterns.



Professional support when appropriate

If patterns suggest a child may need support beyond practical learning guidance, Kidaro encourages families to consult a qualified professional.



Privacy-conscious by default

Because Kidaro is built for children, privacy and responsible data handling are central. Learning data is used to generate the Learning Profile and improve support for the child — not to judge, label, or unnecessarily expose personal information. Families always know what information is being used and why.

What this looks like *in practice*.

Kidaro helps adults choose small, practical next steps while keeping adult judgment at the center. The Learning Profile can guide both the adult's response and the way Kidaro adapts the next learning activity inside the app.



The child making repeated mistakes after a long explanation...

...may not need the concept explained again in the same way. The task may involve too many steps at once, so a **smaller first step** or a clearer example may help.



The child losing focus in a visually busy activity...

...may not be unwilling or unable to learn. The format itself may be creating friction, so a **simpler layout**, visual example, or different pacing may make the activity easier to follow.



The child rushing through answers or avoiding a task...

...may need a different kind of support before continuing. Depending on the situation: a **short pause**, a lower-intensity task, slower feedback, or a different way back into the activity.

These examples are not diagnoses or fixed interpretations. They show how the Learning Profile can help adults move from "*something is not working*" to "*here is a reasonable next step to try*."

- Small adjustments can change how a child *experiences* the next step.

Kidaro for the *settings* where children learn.

Kidaro is designed for the people who guide children's learning in real life — at home, in classrooms, in tutoring sessions, in after-school programs, and in enrichment settings.



At home

Kidaro can help parents understand whether homework friction is about a needed break, a smaller step, or a different explanation.



In the classroom

It can help teachers see how a child responds to difficulty, feedback, task format, and moments when attention begins to fade.



In tutoring & learning support

It can help build a clearer picture of what helps a child stay engaged, recover after mistakes, and continue with more confidence.



After-school & enrichment

It can help keep learning positive and developmentally appropriate, even when children arrive with different levels of energy and readiness.

- Kidaro doesn't replace the adults in these settings. It gives them *clearer signals* and practical next steps.

Looking *ahead*.

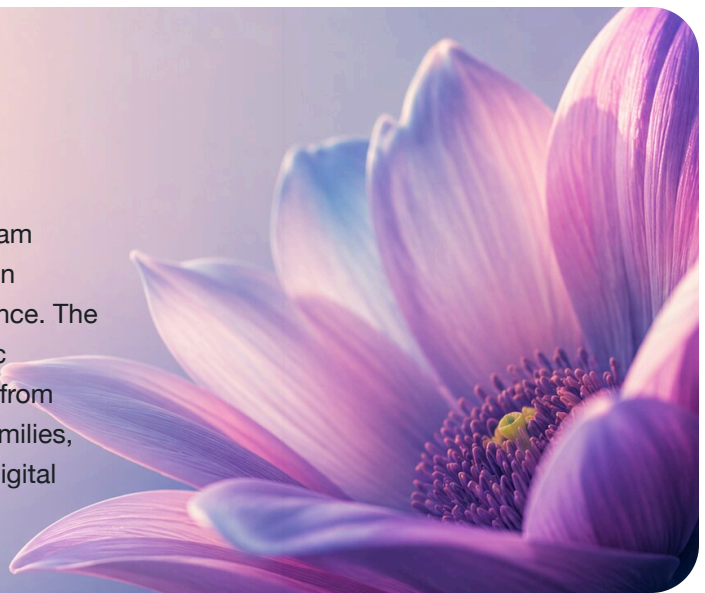
The Learning Profile is designed to be a **foundation**, not a one-time snapshot. As more is understood about how a child learns, the Profile becomes more specific and more useful over time.

Kidaro's longer-term direction is to use the Learning Profile to make learning experiences more responsive. The Profile can help inform how material is presented, paced, supported, and adjusted — so a child encounters learning in a way that better fits how they actually engage with it.



THE COMPANY
AdaptaIQ

Kidaro is the first product from AdaptaIQ, a team building adaptive learning systems grounded in developmental psychology and cognitive science. The longer-term vision is larger: a content-agnostic learning intelligence platform serving learners from childhood through adulthood — supporting families, educators, enterprise organisations, and the digital platforms that reach them.



The current focus is on building this foundation carefully: helping adults understand each child more clearly, and using that understanding to guide better learning support over time.



Better learning decisions, *one moment at a time.*

The decisions that shape a child's learning rarely happen in classrooms or during assessments. They happen at kitchen tables and in living rooms, in the moment — when a task becomes too hard, focus slips, or a child quietly decides that learning feels like something to avoid.

These moments don't require an expert. They require a better next step: one that's matched to how *this* child learns, not just what they're supposed to be working on.

Kidaro gives the adults closest to a child the insight to find that next step with more confidence and less guesswork — and gives children a learning experience that adapts to who they actually are.

Kidaro also uses the Learning Profile to adjust the pace, format, and support of learning activities inside the app.

The goal is straightforward: help children stay engaged, reduce avoidable frustration, and give the adults around them more confidence in how they support learning.

Every child learns *differently*. The adults around them should not have to guess alone.





— JOIN EARLY ACCESS

Now open to *families* and educators.

Kidaro is now open to families and educators for early access. To learn more, request access, or follow updates:

Request early access 

AGES 7-10 • 20-30 MIN INTERVIEW •

PRIVACY-CONSCIOUS BY DEFAULT



© 2026 · ADAPTAIQ INC.

Kidaro is a product of AdaptalQ Inc. AdaptalQ builds adaptive learning systems grounded in developmental psychology, designed to make learning more responsive for children and adults alike.